



Update on the Justin Gold Project The Lost Ace

Disclaimer

Some of the statements & photographs in the following presentation may be deemed to be "forward-looking". All statements & photographs in this presentation, other than statements of historical facts, that address events or developments that management of the Company expects, are forward-looking. Although reasonable assumptions, such statements & photographs are not guarantees of future performance and actual results or developments may differ materially from those in the forward-looking statements & photographs. The Company undertakes no obligation to update these forward-looking statements if management's beliefs, estimates or opinions, or other factors, should change. Factors that could cause actual results to differ materially from those in the forward-looking statements & photographs, include market prices, exploration and development successes, continued availability of capital and financing, and general economic, market or business conditions. Please see the public filings of the Company at www.sedar.com for further information.

Qualified Person

Cornell McDowell P.Geol, and VP of Exploration for Aben Resources, is the Qualified Person as defined by National Instrument 43-101 and has reviewed and approved the technical information in this presentation.

Gold focused exploration company with three exciting projects across Western Canada:

- ❖ Forrest Kerr (British Columbia)
- ❖ Chico (Saskatchewan)
- ❖ **Justin (Yukon)**

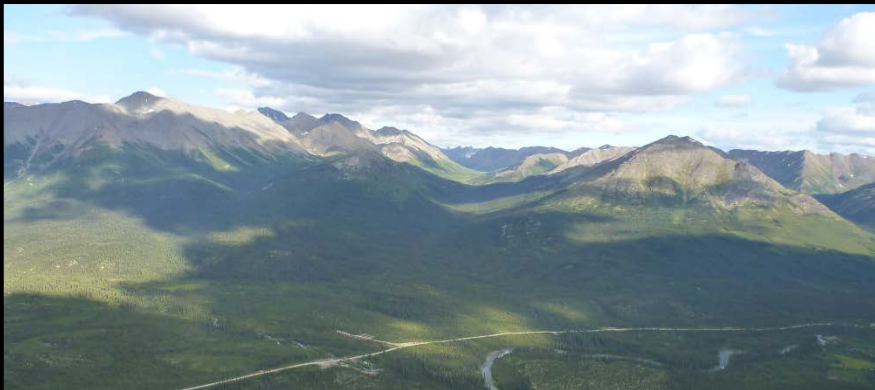
Corporate Highlights

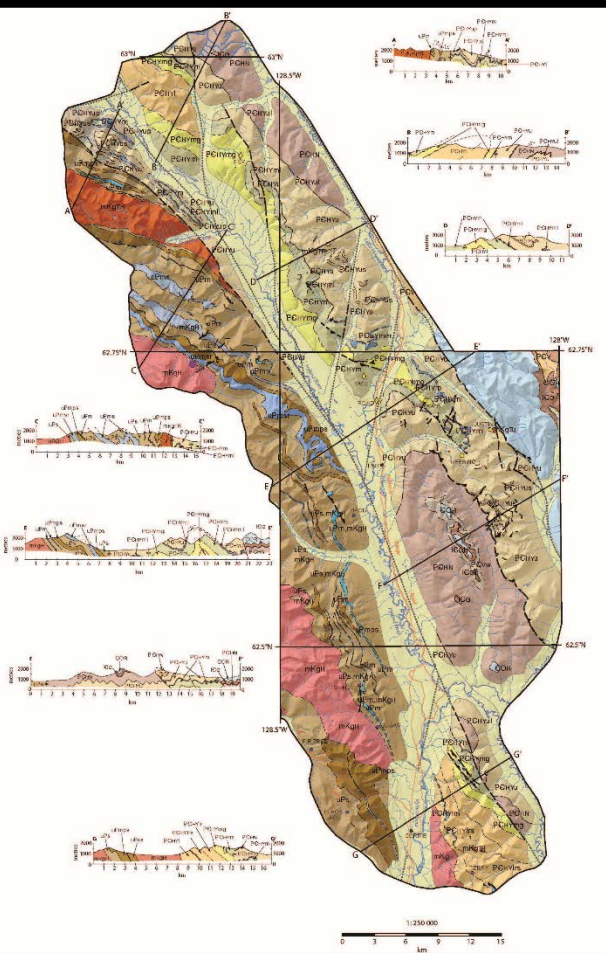
- ❖ New high-grade gold and copper discovery on their flagship Forrest Kerr Project in British Columbia's Golden Triangle
 - ❖ **DDH FK18-10 returned 62.4 g/T gold over 6.0 m**
- ❖ Experienced management team with proven track record of discovery and M&A success
- ❖ Well funded for 2019 exploration programs with approximately \$7 million in the treasury



Project Details

- ❖ Aben Resources owns a 100% interest in the 7592 hectare Justin Gold Project
- ❖ Located 200 km N-NE of Watson Lake at the eastern fringe of the Tintina Gold Province
- ❖ Road accessible camp and staging area at km 143 of Yukon Hwy 10 – Nahanni Range Road
- ❖ Permitted for trenching and drilling

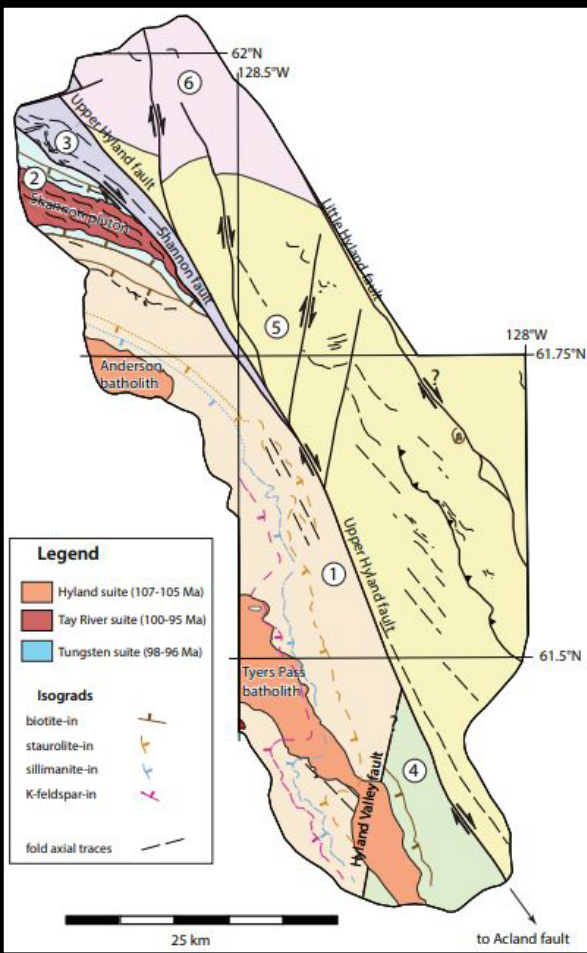


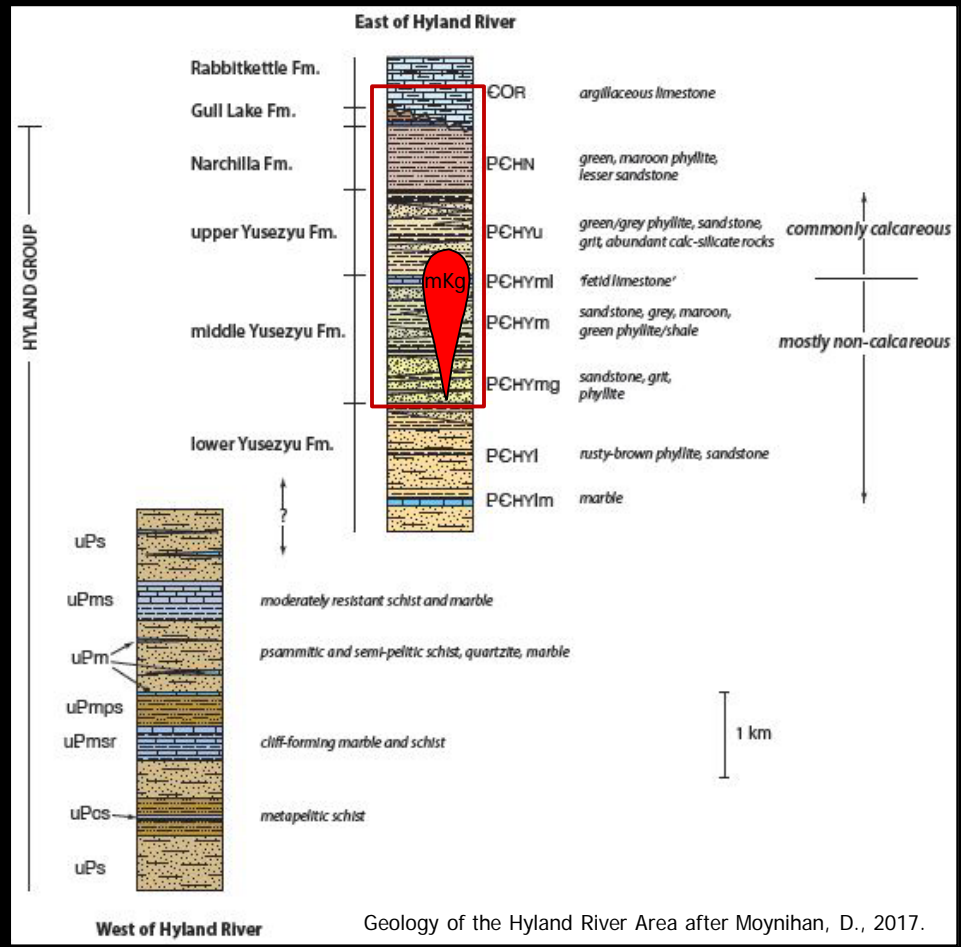
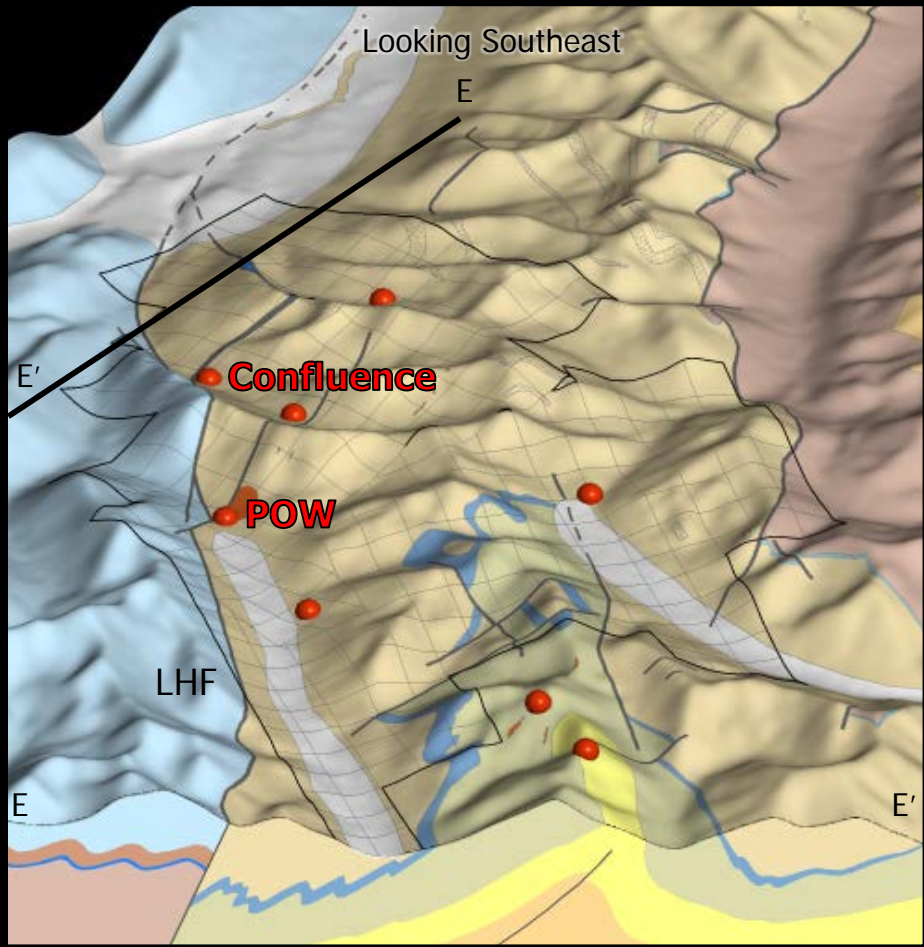


Regional Geology

- ❖ Situated within the Logan Mountains – SE Yukon
- ❖ Underlain by PE to EO_R clastic and carbonate rocks of the Selwyn Basin;
- ❖ Sedimentary rocks were deformed and metamorphosed under greenschist to amphibolite-facies conditions during Cordilleran orogeny
- ❖ Igneous rocks of the region were intruded in the mid-Cretaceous: Hyland Suite, Tay River, Tombstone-Tungsten
- ❖ Upper Hyland Fault (UHF) – a large NW-SE trending fault which separates amphibolite-facies metamorphic rocks west of the fault with greenschist-facies metamorphic rocks east of the fault
- ❖ Orogenic Gold related to regional deformation;
- ❖ Intrusion Related mineralization associated with mid-Cretaceous intrusive rocks (Cantung - Justin).

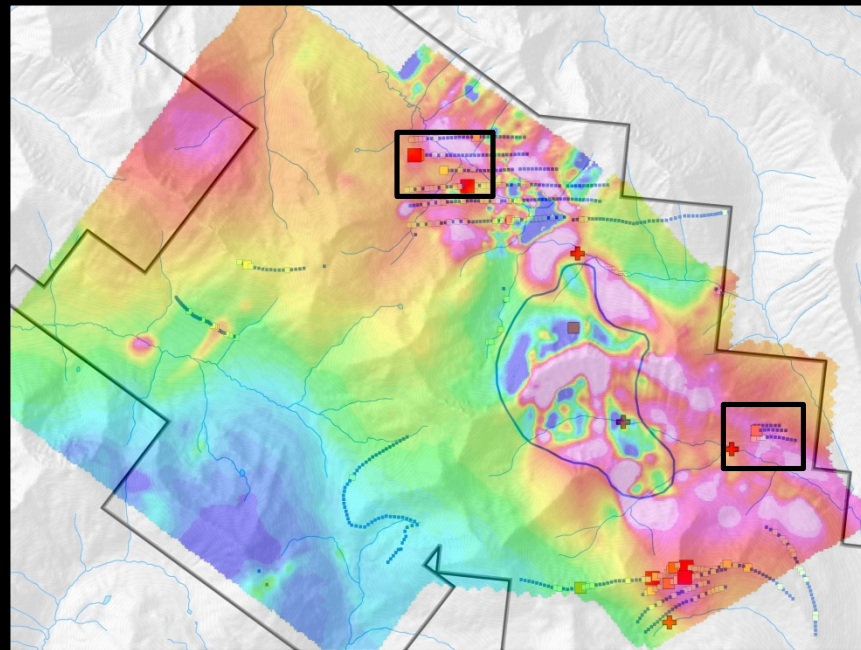
Geology of the Hyland River Area after Moynihan, D., 2017





2017 & 2018 Exploration Programs

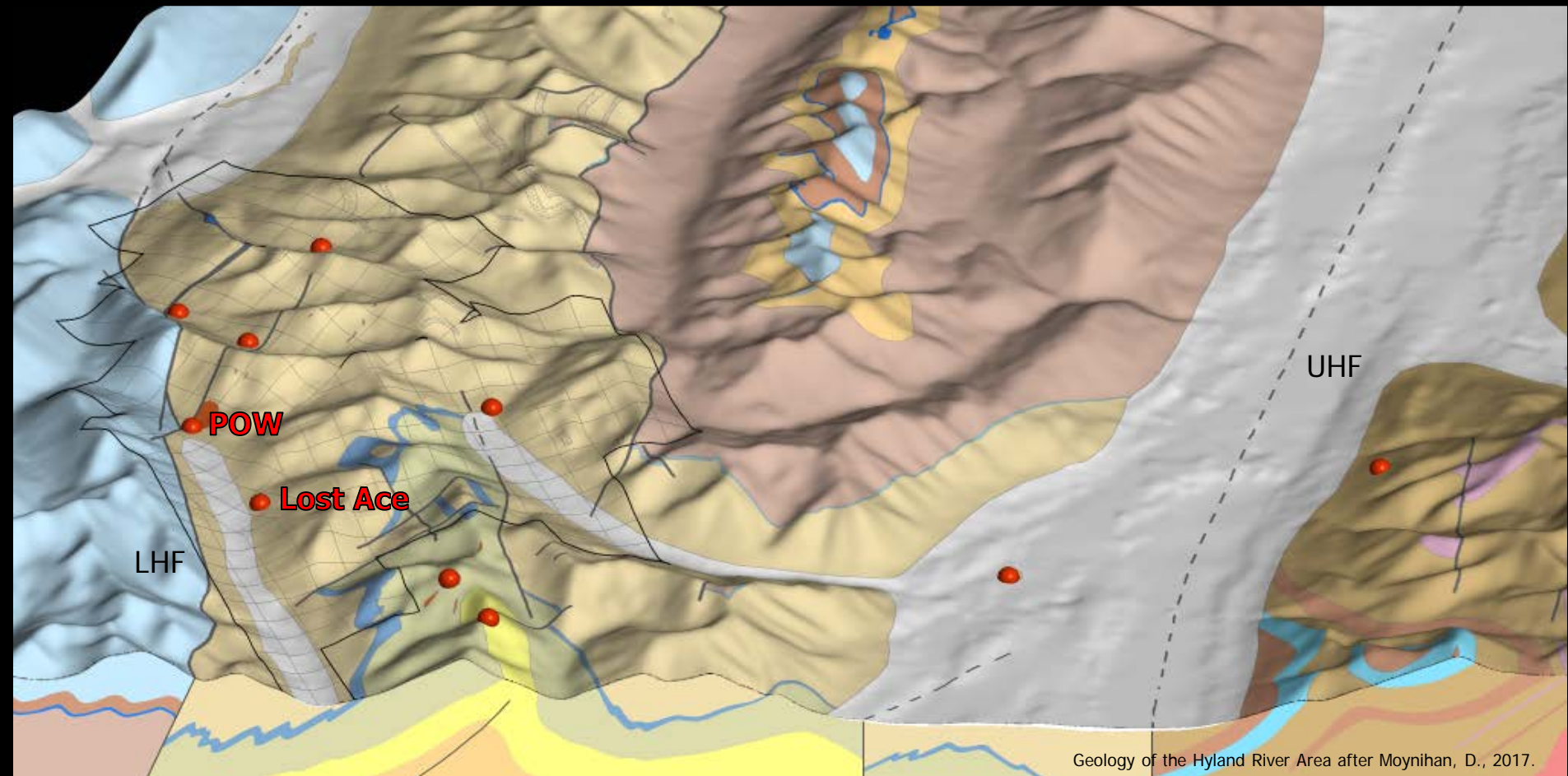
- ❖ YMEP Funded Exploration Programs – thank you to the YGS for their continued support on the Justin Project!
- ❖ Evaluated prospective areas of the property in proximity to the Little Hyland Fault (LHF) and outboard from the POW zone
- ❖ Work programs included Trenching and Geochemical Surveys
- ❖ 2017: 21 channel & 3 chip samples from 4 trenches, 13 grab samples, 380 soil samples covering 16.8 line-km, 2 silt samples, 1 till sample
- ❖ 2018: 19 channel & 28 chip samples from 5 trenches, 16 grab samples, 240 soil samples covering 6.0 line-km, 7 till samples



2017 Exploration Program

- ❖ Work program included trenching and geochemical surveys in proximity to a 2014 soil sample which returned **2.40 g/T gold**
- ❖ Discovery of a new gold-bearing vein system (Lost Ace) which returned **5.0 m of 1.44 g/T gold** including **1.0 m of 4.77 g/T gold** (TR17-004)
- ❖ The gold-bearing vein system developed at the contact between coarse grained sandstone and phyllite of the upper Yusezyu formation
- ❖ Orogenic vs. IRGS (?) Geochemical signature and geologic setting of mineralization at the Lost Ace is consistent with other orogenic gold systems in the Hyland Gold District such as the 3 Ace
- ❖ A 3.8 kg bulk till sample collected 115.0 m west from the Lost Ace returned **1135 visible gold grains**
- ❖ Located 2 km NW from the POW zone that has previously returned drilled intercepts of **1.19 g/T gold over 60.0 m** and **1.49 g/T gold over 46.4 m**

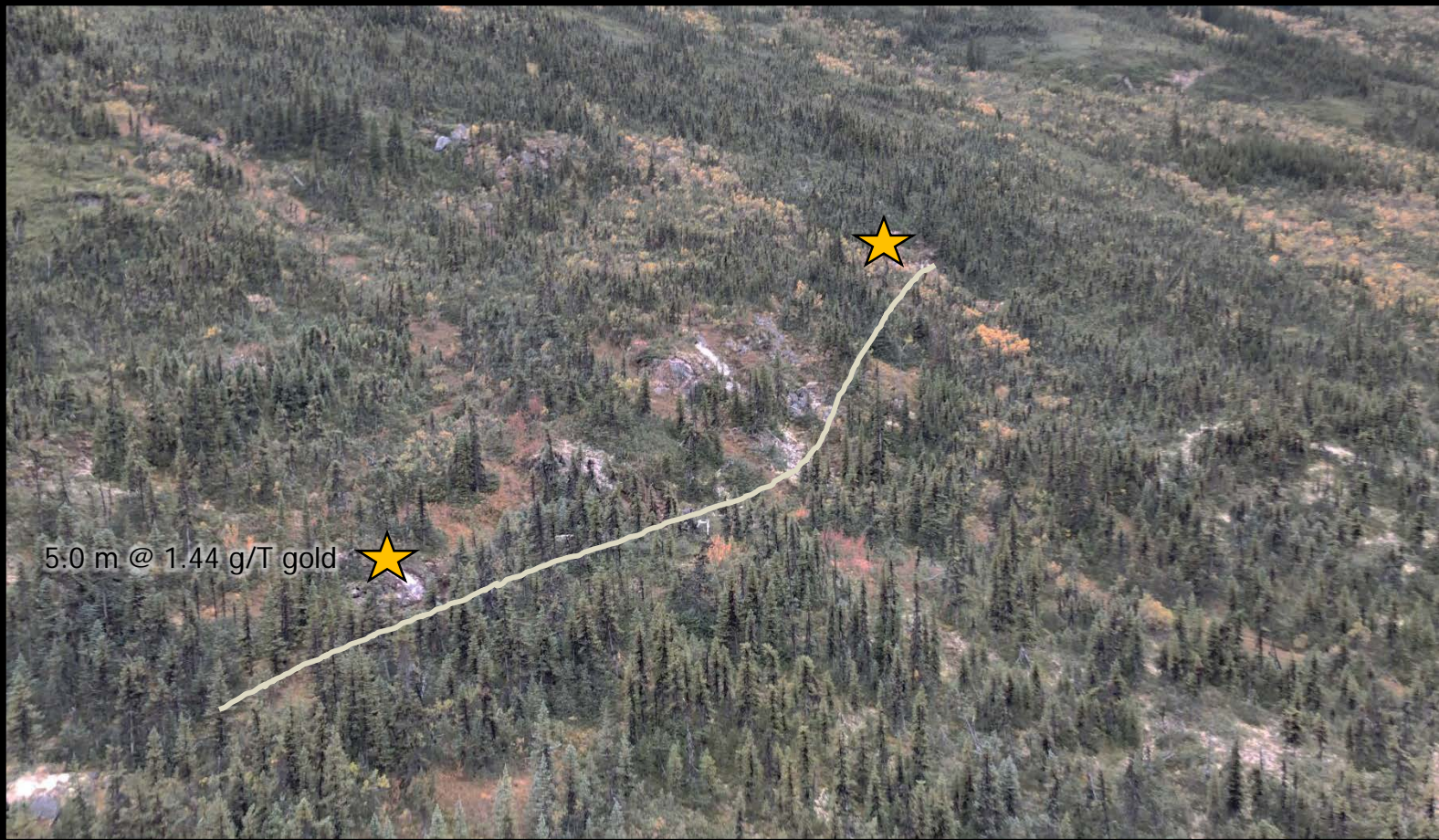




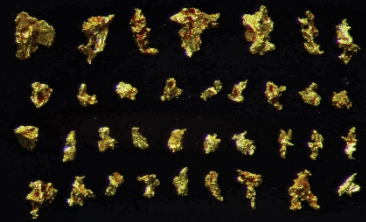
2018 Exploration Program

- ❖ Work program included trenching and geochemical surveys at the Lost Ace to follow-up on the till sample which returned 1135 visible gold grains and the gold-bearing vein which returned 5.0 m of 1.44 g/T gold including 1.0 m of 4.77 g/T gold (TR17-004)
- ❖ The gold-bearing vein system traced over 125.0 m strike length to the west of the 2017 discovery outcrop with an additional 5 trenches completed in 2018
- ❖ **Visible Gold** was observed in quartz veins from two trenches 125.0 m apart along the sandstone-phyllite contact
- ❖ Dominant vein trends are $\sim 100^\circ$ (subparallel to lithologic contact) and $\sim 320^\circ$ (discordant)
- ❖ Reconnaissance till sampling completed along two separate traverses which are considered prospective for gold mineralization
- ❖ Sample results pending for the 2018 program

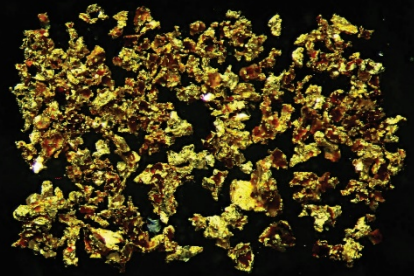




5.0 m @ 1.44 g/T gold ★



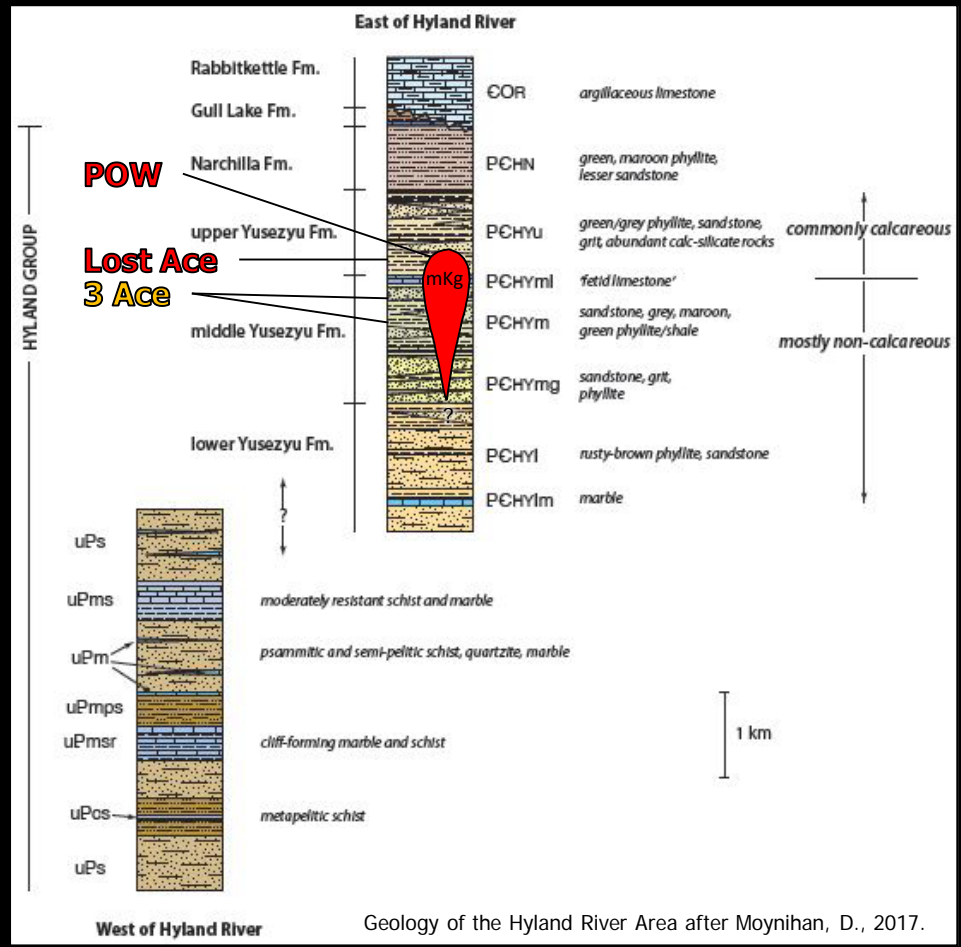
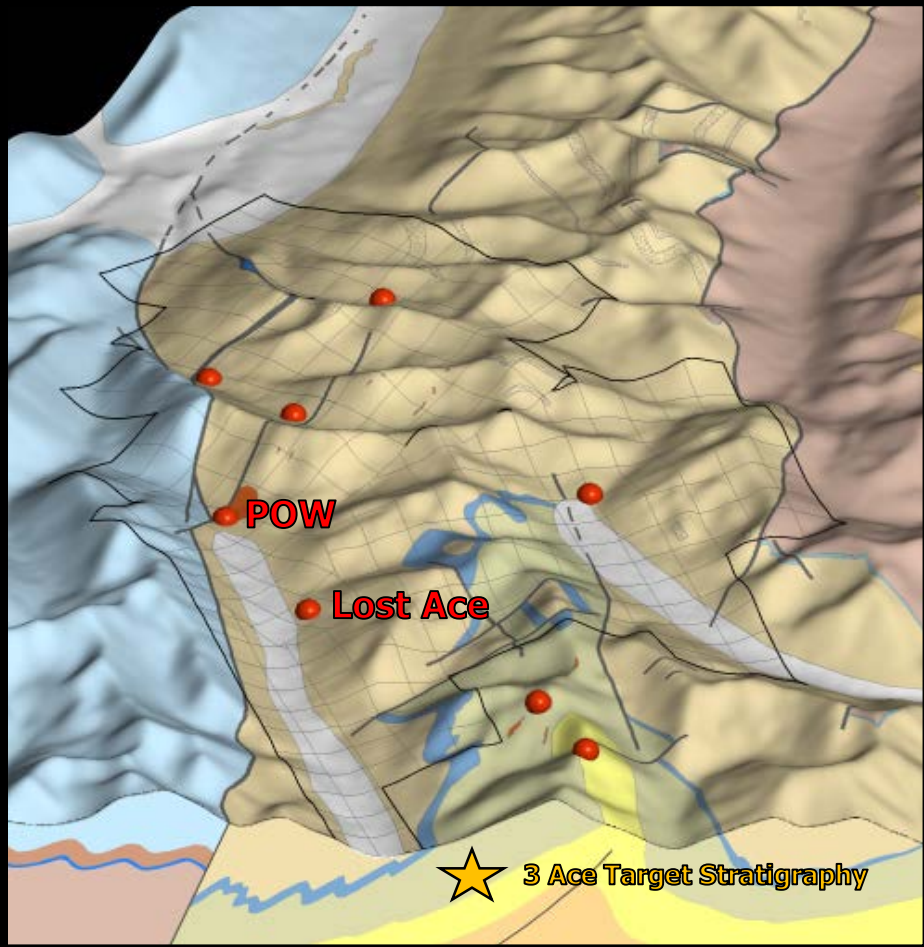
0.5 mm



0.5 mm



0.25 mm



Justin Project Highlights

- ❖ Intrusion Related Gold System in an emerging camp better known for orogenic gold and tungsten represents a bulk tonnage exploration target
- ❖ 2017-2018 exploration programs discovered the potential for orogenic gold mineralization on the Justin Property at the Lost Ace where Visible Gold was observed in quartz veins from two trenches
- ❖ The projected middle Yusezyu formation which hosts mineralization on the 3 Ace Property trends onto the Justin Property – potential exploration target and/or source of metals for the IRGS (?)
- ❖ Only 2500 m have been drilled to date at the POW zone tracing gold mineralization from surface over an area measuring 400 m x 200 m to depths exceeding 200 m
- ❖ Numerous high priority targets remain untested representing significant exploration potential





Burke Geological Services

